



Stainless Steel Grooved Fittings

Schedule 10 Fittings

GroovJoint grooved pipe fittings are full-flow design in both 304L and 316L grades of stainless steel, conforming to ASTM A403. 1"-12" roll grooved material, 14"-24" also available.

GroovJoint Product Line:

- 90° Elbows
- 45° Elbows
- 11¼° Elbow
- 22½° Elbows
- Tees
- Eccentric Reducers
- Caps
- Flange Adaptors
- Laterals
- Butterfly Valves
- Concentric Reducers (GRV x GRV, GRV x PRESS, GRV x MNPT)
- Reducing Tees (GRV x GRV, GRV x PRESS, GRV x MNPT)

Schedule 40 Fittings

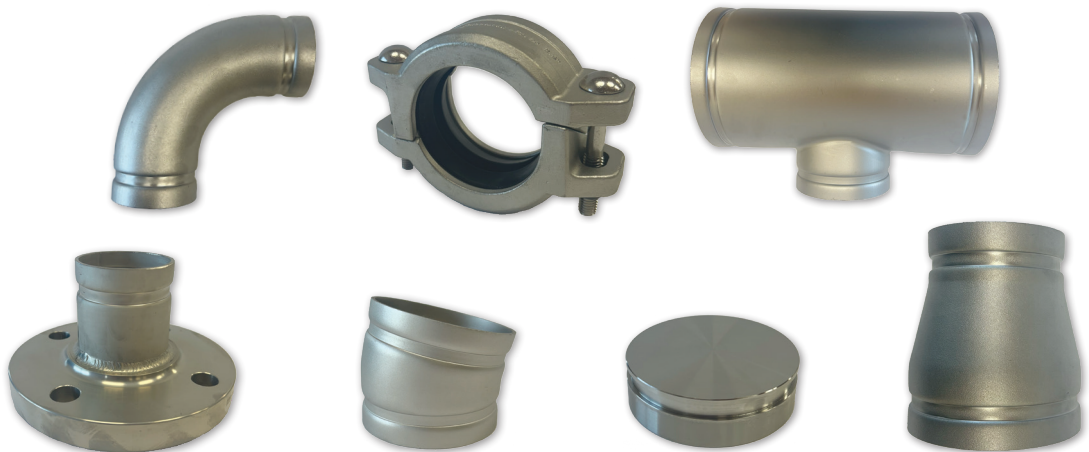
GroovJoint sch. 40 fittings are cut/roll grooved and available in 304L and 316L grades. 1"-12" roll grooved material, 14"-24" also available. Dimensions may vary from sch. 10. Roll groove may not be available for all sizes.

Domestic Fittings

Fittings available as domestic (AIS/Buy American/Buy America, etc.)

Stainless Steel Grooved Couplings

- Rigid Couplings
 - Flexible Couplings
 - Heavy-Duty Flexible Couplings
 - Duplex Couplings
 - Galvanized Ductile Iron Couplings
- Domestic options available (AIS/Buy American/Buy America, etc.)



Fabrication

GroovJoint manufactures a variety of stainless steel custom fabrications and specialty fittings designed to the customer's needs.

Specialty products include, but are not limited to:

- Custom dimension fittings
- Grooved laterals & wyes
- 3D grooved elbows
- Groove by press fittings
- Custom reduction tees and reducers
- Large diameter grooved reducing tees
- Grooved spool pieces
- Groove by male or female thread fittings

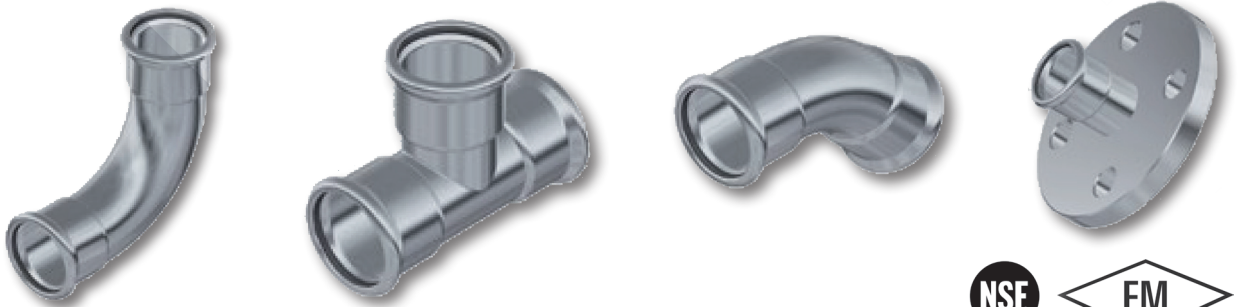
Stainless Steel Press Fittings

PressJoint stainless steel fittings are press-style stainless steel fittings offered in sizes ranging from 1/2" to 2" and can be installed on both Schedule 5 and Schedule 10 stainless steel pipe. Our products have a maximum pressure rating of 300 psi (temperature dependent) when installed. M18 Force Logic Press Tool is the only tool authorized to be used with GroovJoint press system.

GroovJoint Press Product Line:

- 90° Elbows
- Slip Couplings
- Tees
- Reducers
- Caps
- Unions
- Ball Valves
- 45° Elbows
- 90° Street Elbows
- Reducing Tees
- Female Adaptors
- Flange Adaptors
- Weld Adaptor
- Couplings
- 45° Street Elbows
- Reducing FNPT Tees
- Male Adaptors
- Van Stone Flange Adaptors
- Transition Nipples

EPDM, NBR (Buna), & Viton Gaskets available



Corporate Office:
155 North Wacker Drive
Suite 4250
Chicago, IL 60606
312-803-2627
sales@groovjoint.com
www.groovjoint.com



Place distributor label here